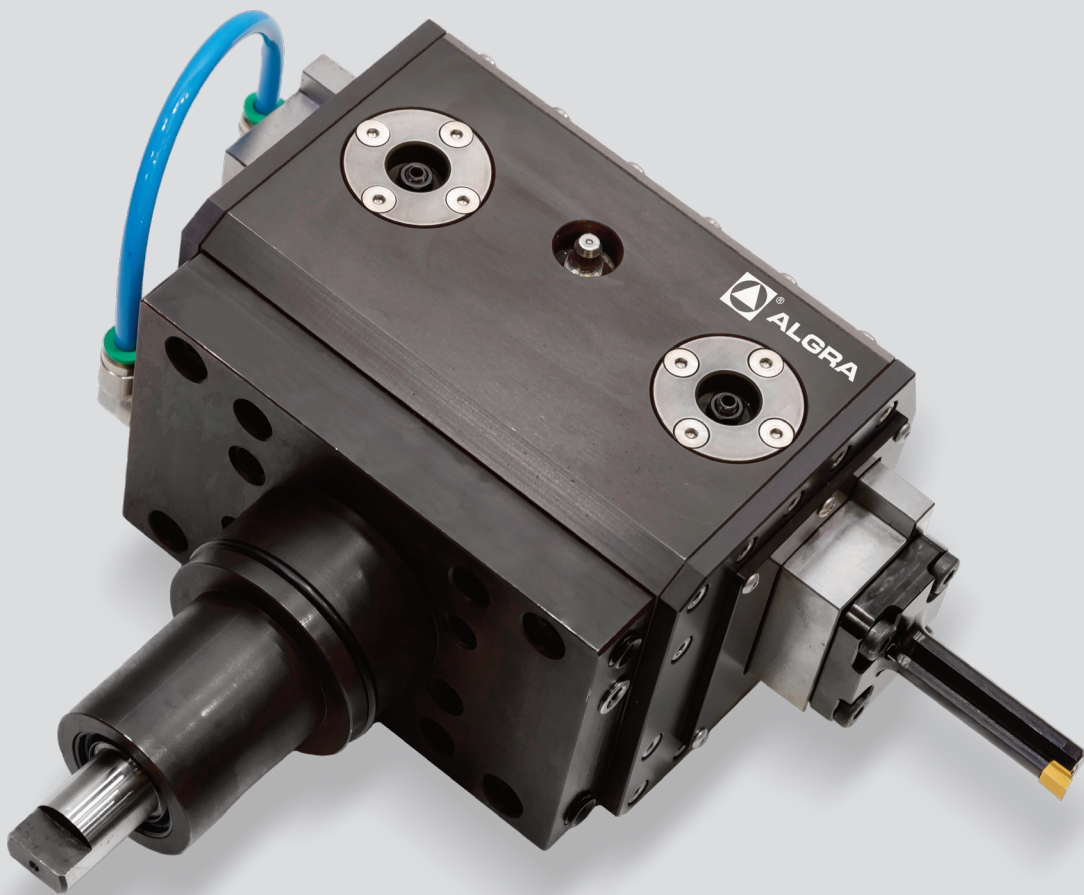


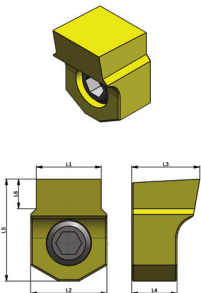
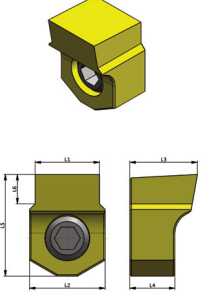
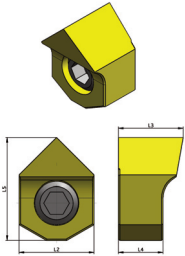
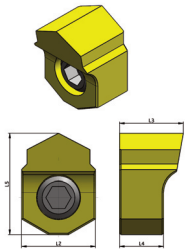
Stozzatore Broaching toolholder



**Indice
Index**

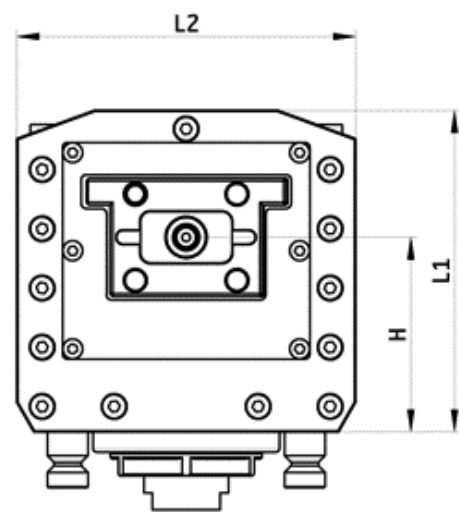
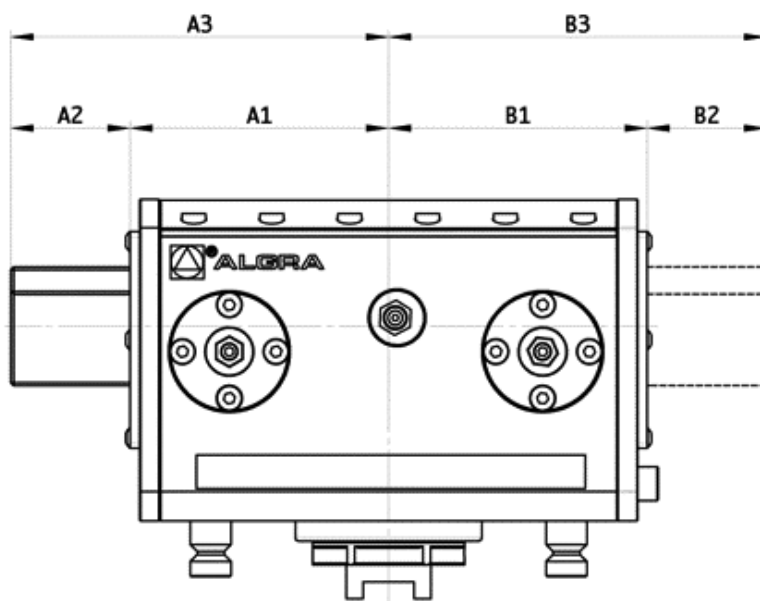
Broaching Tool	Model	Code	Page	Broaching Tool	Model	Code	Page
TAGLIE STOZZATORE BROACHING TOOL SIZE	ALST-25 ALST-35 ALST-50 ALST-65		4		25 series	ALUTM-S-02-25 ALUTM-S-03-25 ALUTM-S-04-25 ALUTM-S-05-25 ALUTM-S-06-25 ALUTM-S-08-25	8
PORTA INSERTO ALUTM INSERT HOLDER ALUTM	25 series	ALUTM-02-25 ALUTM-03-25 ALUTM-04-25 ALUTM-05-25 ALUTM-06-25	5	PORTA INSERTO ALUTM-S INSERT HOLDER ALUTM-S	35 series	ALUTM-S-02-35 ALUTM-S-03-35 ALUTM-S-04-35 ALUTM-S-05-35 ALUTM-S-06-35 ALUTM-S-08-35 ALUTM-S-10-35 ALUTM-S-12-35 ALUTM-S-14/16-35	8
	35 series	ALUTM-02-35 ALUTM-03-35 ALUTM-04-35 ALUTM-05-35 ALUTM-06-35 ALUTM-08-35 ALUTM-10/12-35 ALUTM-14/16-35	5		50 series	ALUTM-S-02-50 ALUTM-S-03-50 ALUTM-S-04-50 ALUTM-S-05-50 ALUTM-S-06-50 ALUTM-S-08-50 ALUTM-S-10-50 ALUTM-S-12-50 ALUTM-S-14/16-50	8
	50 series	ALUTM-02-50 ALUTM-03-50 ALUTM-04-50 ALUTM-05-50 ALUTM-06-50 ALUTM-08-50 ALUTM-10/12-50 ALUTM-14/16-50	5		60 series	ALUTM-S-02-65 ALUTM-S-03-65 ALUTM-S-04-65 ALUTM-S-05-65 ALUTM-S-06-65 ALUTM-S-08-65 ALUTM-S-10-65 ALUTM-S-12-65 ALUTM-S-14/16-65	8
	65 series	ALUTM-02-65 ALUTM-03-65 ALUTM-04-65 ALUTM-05-65 ALUTM-06-65 ALUTM-08-65 ALUTM-10/12-65 ALUTM-14/16-65	5				
PORTA INSERTO ALUTM-SQ INSERT HOLDER ALUTM-SQ	25 series	ALUTM-SQ-8/10-25 ALUTM-SQ-10/13-25 ALUTM-SQ-13/16-25	6	PORTA INSERTO ALUTM-M INSERT HOLDER ALUTM-M	25 series	ALUTM-M-25	9
	35 series	ALUTM-SQ-8/10-35 ALUTM-SQ-10/13-35 ALUTM-SQ-13/16-35 ALUTM-SQ-16/19-35 ALUTM-SQ-19/27-35 ALUTM-SQ-19/27-35	6		35 series	ALUTM-M-35	9
	50 series	ALUTM-SQ-8/10-50 ALUTM-SQ-10/13-50 ALUTM-SQ-13/16-50 ALUTM-SQ-16/19-50 ALUTM-SQ-19/27-50 ALUTM-SQ-27/37-50	6		50 series	ALUTM-M-50	9
	65 series	ALUTM-SQ-8/10-65 ALUTM-SQ-10/13-65 ALUTM-SQ-13/16-65 ALUTM-SQ-16/19-65 ALUTM-SQ-19/27-65 ALUTM-SQ-27/37-65	6		60 series	ALUTM-M-65	9
PORTA INSERTO ALUTM-HEX INSERT HOLDER ALUTM-HEX	25 series	ALUTM-HEX-9/11-25 ALUTM-HEX-11/17-25 ALUTM-HEX-17/28-25	7				
	35 series	ALUTM-HEX-9/11-35 ALUTM-HEX-11/17-35 ALUTM-HEX-17/28-35 ALUTM-HEX-28/37-35 ALUTM-HEX-37/45-35	7				
	50 series	ALUTM-HEX-9/11-50 ALUTM-HEX-11/17-50 ALUTM-HEX-17/28-50 ALUTM-HEX-28/37-50 ALUTM-HEX-37/45-50	7				
	60 series	ALUTM-HEX-9/11-65 ALUTM-HEX-11/17-65 ALUTM-HEX-17/28-65 ALUTM-HEX-28/37-65 ALUTM-HEX-37/45-65	7				

**Indice
Index**

Inserti / Inserts	Code	Page	Inserti / Inserts	Code	Page
<p>INSERTI (MM) INSERTI (MM)</p> 	ALIN-02 P9	10	<p>INSERTI POLLICI INSERTS INCHES</p> 	ALIN-3/32"-P9	12
	ALIN-02 P9-SM			ALIN-3/32"-H7	
	ALIN-02 H7			ALIN-3/32"-D10	
	ALIN-02 H7-SM			ALIN-3/32"-C11	
	ALIN-02 D10			ALIN-1/8"-P9	
	ALIN-02 C11			ALIN-1/8"-H7	
	ALIN-03 P9			ALIN-1/8"-D10	
	ALIN-03 P9-SM			ALIN-1/8"-C11	
	ALIN-03 H7			ALIN-5/32"-P9	
	ALIN-03 H7-SM			ALIN-5/32"-H7	
	ALIN-03 D10			ALIN-5/32"-D10	
	ALIN-03 C11			ALIN-5/32"-C11	
	ALIN-04 P9			ALIN-3/16"-P9	
	ALIN-04 P9-SM			ALIN-3/16"-H7	
	ALIN-04 H7			ALIN-3/16"-D10	
	ALIN-04 H7-SM			ALIN-3/16"-C11	
	ALIN-04 D10			ALIN-1/4"-P9	
	ALIN-04 C11			ALIN-1/4"-H7	
	ALIN-05 P9			ALIN-1/4"-D10	
	ALIN-05 P9-SM			ALIN-1/4"-C11	
	ALIN-05 H7			ALIN-9/32"-P9	
	ALIN-05 H7-SM			ALIN-9/32"-H7	
	ALIN-05 D10			ALIN-9/32"-D10	
	ALIN-05 C11			ALIN-9/32"-C11	
	ALIN-06 P9			ALIN-5/16"-P9	
	ALIN-06 P9-SM			ALIN-5/16"-H7	
	ALIN-06 H7			ALIN-5/16"-D10	
	ALIN-06 H7-SM			ALIN-5/16"-C11	
	ALIN-06 D10			ALIN-3/8"-P9	
	ALIN-06 C11			ALIN-3/8"-H7	
	ALIN-08 P9			ALIN-3/8"-D10	
	ALIN-08 P9-SM			ALIN-3/8"-C11	
	ALIN-08 H7			ALIN-7/16"-P9	
	ALIN-08 H7-SM			ALIN-7/16"-H7	
	ALIN-08 D10			ALIN-7/16"-D10	
	ALIN-08 C11			ALIN-7/16"-C11	
	ALIN-10 P9			ALIN-1/2"-P9	
	ALIN-10 P9-SM			ALIN-1/2"-H7	
	ALIN-10 H7			ALIN-1/2"-D10	
	ALIN-10 H7-SM			ALIN-1/2"-C11	
	ALIN-10 D10			ALIN-9/16"-P9	
	ALIN-10 C11			ALIN-9/16"-H7	
	ALIN-12 P9			ALIN-9/16"-D10	
	ALIN-12 P9-SM			ALIN-9/16"-C11	
ALIN-12 H7	ALIN-5/8"-P9				
ALIN-12 H7-SM	ALIN-5/8"-H7				
ALIN-12 D10	ALIN-5/8"-D10				
ALIN-12 C11	ALIN-5/8"-C11				
ALIN-14 P9	ALIN-3/4"-P9*				
ALIN-14 P9-SM	ALIN-3/4"-H7*				
ALIN-14 H7	ALIN-3/4"-D10*				
ALIN-14 H7-SM	ALIN-3/4"-C11*				
ALIN-14 D10					
ALIN-14 C11					
ALIN-16 P9					
ALIN-16 P9-SM					
ALIN-16 H7					
ALIN-16 H7-SM					
ALIN-16 D10					
ALIN-16 C11					
ALIN-18 P9**					
ALIN-18 P9-SM**					
ALIN-18 H7**					
ALIN-18 H7-SM**					
ALIN-18 D10**					
ALIN-18 C11**					
ALIN-20 P9**					
ALIN-20 P9-SM**					
ALIN-20 H7**					
ALIN-20 H7-SM**					
ALIN-20 D10**					
ALIN-20 C11**					
ALIN-22 P9**					
ALIN-22 P9-SM**					
ALIN-22 H7**					
ALIN-22 H7-SM**					
ALIN-22 D10**					
ALIN-22 C11**					
ALIN-25 P9**					
ALIN-25 P9-SM**					
ALIN-25 H7**					
ALIN-25 H7-SM**					
ALIN-25 D10**					
ALIN-25 C11**					
			<p>INSERTI PER QUADRO INSERTS FOR SQUARE</p> 	ALIN-SQ-8/10 ALIN-SQ-10/13 ALIN-SQ-13/16 ALIN-SQ-16/19 ALIN-SQ-19/27 ALIN-SQ-27/37 ALIN-SQ-37/50	14
			<p>INSERTI PER ESAGONO INSERTS FOR HEXAGON</p> 	ALIN-HEX-9/11 ALIN-HEX-11/17 ALIN-HEX-17/28 ALIN-HEX-28/37 ALIN-HEX-37/45 ALIN-HEX-45/70	14

Taglie Stozzatore
Broaching tool size

CODICI STOZZATORE Broaching tool code	CORSA (mm) Max slide travel (mm)	A1 (mm)	A2 (mm)	A3 (mm)	B1 (mm)	B2 (mm)	B3 (mm)	L1 (mm)	L2 (mm)	H (mm)
ALST-25	25	50	27	77	46	27	73	52	63	30
ALST-35	35	76	35	111	76	35	111	95	100	58
ALST-50	50	91	50	141	76	50	126	95	110	58
ALST-65	65	106	65	171	76	65	141	97	125	57,5



Porta inserto Alutm serie 25
Insert holder Alutm 25 series

CODICE CODE	L1 (mm)	L2 (mm)	L3 (mm)	L4 (mm)	L5 (mm)	L6 (mm)	D1 (mm)	Foro min. (mm) Min hole (mm)	Peso (g) Weight (g)
ALUTM-02-25	26	43	8	9	27,5	19	6,5	7	25
ALUTM-03-25	26	43	8	9	27,5	19	8	8,7	28,5
ALUTM-04-25	26	43	8	9	27,5	19	10	11	32,5
ALUTM-05-25	26	43	8	9	27,5	19	12	13	40
ALUTM-06-25	26	43	8	9	27,5	19	15	17	46,5

Porta inserto Alutm serie 35
Insert holder Alutm 35 series

CODICE CODE	L1 (mm)	L2 (mm)	L3 (mm)	L4 (mm)	L5 (mm)	L6 (mm)	D1 (mm)	Foro min. (mm) Min hole (mm)	Peso (g) Weight (g)
ALUTM-02-35	25	58	13	20	43	35	6	7	0,15
ALUTM-03-35	30	63	13	20	43	35	8	8,7	0,16
ALUTM-04-35	40	73	13	20	43	35	10	11	0,17
ALUTM-05-35	46	79	13	20	43	35	12	13	0,18
ALUTM-06-35	46	79	13	20	43	35	16	17	0,21
ALUTM-08-35	46	79	13	20	43	35	20	21,5	0,225
ALUTM-10/12-35	46	79	13	20	43	35	22	24	0,235
ALUTM-14/16-35	46	79	13	20	43	35	25	27	0,245

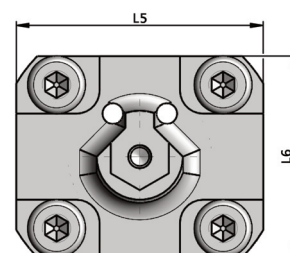
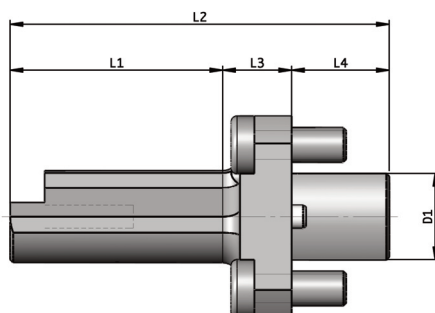
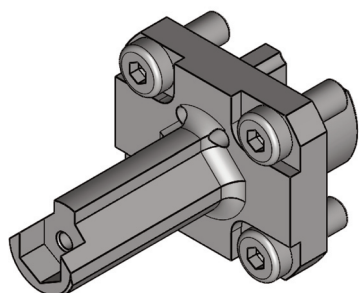
Porta inserto Alutm serie 50
Insert holder Alutm 50 series

CODICE CODE	L1 (mm)	L2 (mm)	L3 (mm)	L4 (mm)	L5 (mm)	L6 (mm)	D1 (mm)	Foro min. (mm) Min hole (mm)	Peso (g) Weight (g)
ALUTM-02-50	25	58	13	20	43	35	6	7	0,15
ALUTM-03-50	30	63	13	20	43	35	8	8,7	0,16
ALUTM-04-50	40	73	13	20	43	35	10	11	0,17
ALUTM-05-50	46	79	13	20	43	35	12	13	0,18
ALUTM-06-50	56	89	13	20	43	35	16	17	0,21
ALUTM-08-50	56	89	13	20	43	35	20	21,5	0,225
ALUTM-10/12-50	56	89	13	20	43	35	22	24	0,235
ALUTM-14/16-50	56	89	13	20	43	35	25	27	0,245

5

Porta inserto Alutm serie 65
Insert holder Alutm 65 series

CODICE CODE	L1 (mm)	L2 (mm)	L3 (mm)	L4 (mm)	L5 (mm)	L6 (mm)	D1 (mm)	Foro min. (mm) Min hole (mm)	Peso (g) Weight (g)
ALUTM-02-65	25	58	13	20	43	35	6	7	0,15
ALUTM-03-65	30	63	13	20	43	35	8	8,7	0,16
ALUTM-04-65	40	73	13	20	43	35	10	11	0,17
ALUTM-05-65	46	79	13	20	43	35	12	13	0,21
ALUTM-06-65	56	89	13	20	43	35	16	17	0,18
ALUTM-08-65	68	102	13	20	43	35	20	21,5	0,24
ALUTM-10/12-65	70	103	13	20	43	35	22	24	0,265
ALUTM-14/16-65	70	103	13	20	43	35	25	27	0,245



Porta inserto Alutm-SQ serie 25
Insert holder Alutm-SQ 25 series

CODICE CODE	L1 (mm)	L2 (mm)	L3 (mm)	L4 (mm)	L5 (mm)	L6 (mm)	D1 (mm)	Foro min. (mm) Min hole (mm)	Peso (g) Weight (g)
ALUTM-SQ-8/10-25	26	29	8	9	27,5	19	8	8,5	28,5
ALUTM-SQ-10/13-25	26	29	8	9	27,5	19	8,6	10	30
ALUTM-SQ-13/16-25	26	29	8	9	27,5	19	12	13	40

Porta inserto Alutm-SQ serie 35
Insert holder Alutm-SQ 35 series

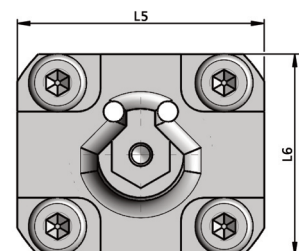
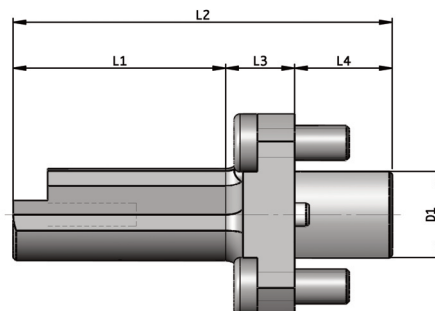
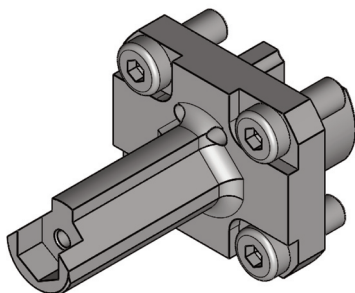
CODICE CODE	L1 (mm)	L2 (mm)	L3 (mm)	L4 (mm)	L5 (mm)	L6 (mm)	D1 (mm)	Foro min. (mm) Min hole (mm)	Peso (g) Weight (g)
ALUTM-SQ-8/10-35	30	58	13	20	43	35	7,25	8	0,15
ALUTM-SQ-10/13-35	40	63	13	20	43	35	8,6	10	0,16
ALUTM-SQ-13/16-35	46	73	13	20	43	35	12	13	0,17
ALUTM-SQ-16/19-35	46	79	13	20	43	35	15	16	0,18
ALUTM-SQ-19/27-35	46	79	13	20	43	35	18,5	19	0,21
ALUTM-SQ-27/37-35	46	79	13	20	43	35	25	27	0,225

Porta inserto Alutm-SQ serie 50
Insert holder Alutm-SQ 50 series

CODICE CODE	L1 (mm)	L2 (mm)	L3 (mm)	L4 (mm)	L5 (mm)	L6 (mm)	D1 (mm)	Foro min. (mm) Min hole (mm)	Peso (g) Weight (g)
ALUTM-SQ-8/10-50	30	58	13	20	43	35	7,25	8	0,15
ALUTM-SQ-10/13-50	40	63	13	20	43	35	8,6	10	0,16
ALUTM-SQ-13/16-50	50	77	13	20	43	35	12	13	0,17
ALUTM-SQ-16/19-50	52	87	13	20	43	35	15	16	0,21
ALUTM-SQ-19/27-50	60	93	13	20	43	35	18,5	19	0,225
ALUTM-SQ-27/37-50	60	93	13	20	43	35	25	27	0,225

Porta inserto Alutm-SQ serie 65
Insert holder Alutm-SQ 65 series

CODICE CODE	L1 (mm)	L2 (mm)	L3 (mm)	L4 (mm)	L5 (mm)	L6 (mm)	D1 (mm)	Foro min. (mm) Min hole (mm)	Peso (g) Weight (g)
ALUTM-SQ-8/10-65	30	58	13	20	43	35	7,25	8	0,15
ALUTM-SQ-10/13-65	40	63	13	20	43	35	8,6	10	0,16
ALUTM-SQ-13/16-4-65	50	77	13	20	43	35	12	13	0,17
ALUTM-SQ-16/19-65	52	87	13	20	43	35	15	16	0,21
ALUTM-SQ-19/27-65	75	108	13	20	43	35	18,5	19	0,29
ALUTM-SQ-27/37-65	75	108	13	20	43	35	25	27	0,315



Porta inserto Alutm-hex serie 25
Insert holder Alutm-hex 25 series

CODICE CODE	Modello Stozzatore Broaching tool model	L1 (mm)	L2 (mm)	L3 (mm)	L4 (mm)	L5 (mm)	L6 (mm)	D1 (mm)	Foro min. (mm) Min hole (mm)	Peso (g) Weight (g)
ALUTM-HEX-9/11-25	ST-25	26	29	8	9	27,5	19	8	8,7	29,5
ALUTM-HEX-11/17-25	ST-25	26	29	8	9	27,5	19	10	11,55	35,5
ALUTM-HEX-17/28-25	ST-25	26	29	8	9	27,5	19	15	16	52

porta inserto Alutm-hex serie 35
insert holder Alutm-hex 35 series

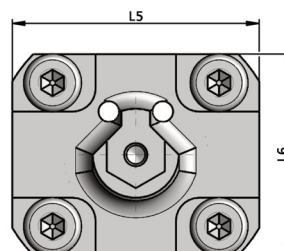
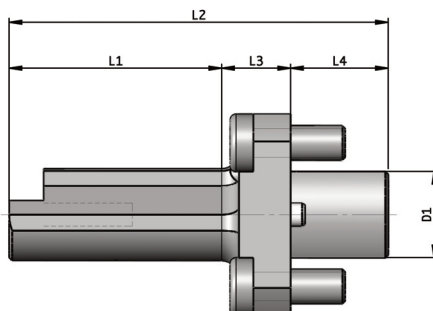
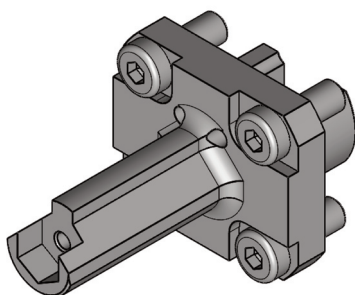
CODICE CODE	Modello Stozzatore Broaching tool model	L1 (mm)	L2 (mm)	L3 (mm)	L4 (mm)	L5 (mm)	L6 (mm)	D1 (mm)	Foro min. (mm) Min hole (mm)	Peso (g) Weight (g)
ALUTM-HEX-9/11-35	ST-35	30	58	13	20	43	35	8	8,7	0,15
ALUTM-HEX-11/17-35	ST-35	40	63	13	20	43	35	10	11	0,16
ALUTM-HEX-17/28-35	ST-35	46	73	13	20	43	35	15	16	0,17
ALUTM-HEX-28/37-35	ST-35	46	79	13	20	43	35	25	27	0,18
ALUTM-HEX-37/45-35	ST-35	46	79	13	20	43	35	28	30	0,27

porta inserto Alutm-hex serie 50
insert holder Alutm-hex 50 series

CODICE CODE	Modello Stozzatore Broaching tool model	L1 (mm)	L2 (mm)	L3 (mm)	L4 (mm)	L5 (mm)	L6 (mm)	D1 (mm)	Foro min. (mm) Min hole (mm)	Peso (g) Weight (g)
ALUTM-HEX-9/11-50	ST-50	30	58	13	20	43	35	8	8,7	0,15
ALUTM-HEX-11/17-50	ST-50	40	63	13	20	43	35	10	11	0,16
ALUTM-HEX-17/28-50	ST-50	60	73	13	20	43	35	15	16	0,21
ALUTM-HEX-28/37-50	ST-50	60	79	13	20	43	35	25	27	0,225
ALUTM-HEX-37/45-50	ST-50	60	79	13	20	43	35	28	30	0,245

porta inserto Alutm-hex serie 65
insert holder Alutm-hex 65 series

CODICE CODE	Modello Stozzatore Broaching tool model	L1 (mm)	L2 (mm)	L3 (mm)	L4 (mm)	L5 (mm)	L6 (mm)	D1 (mm)	Foro min. (mm) Min hole (mm)	Peso (g) Weight (g)
ALUTM-HEX-9/11-65	ST-65	30	58	13	20	43	35	8	8,7	0,15
ALUTM-HEX-11/17-65	ST-65	40	73	13	20	43	35	10	11	0,16
ALUTM-HEX-17/28-65	ST-65	60	93	13	20	43	35	15	16	0,21
ALUTM-HEX-28/37-65	ST-65	75	108	13	20	43	35	25	27	0,225
ALUTM-HEX-37/45-65	ST-65	75	108	13	20	43	35	28	30	0,275



Porta inserto Alutm-S serie 25
Insert holder Alutm-S 25 series

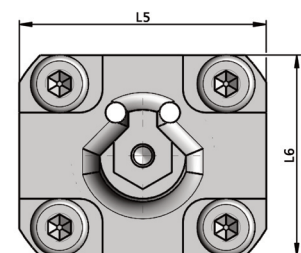
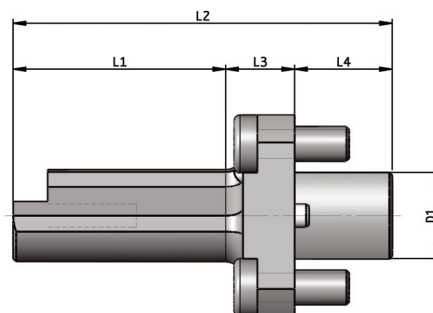
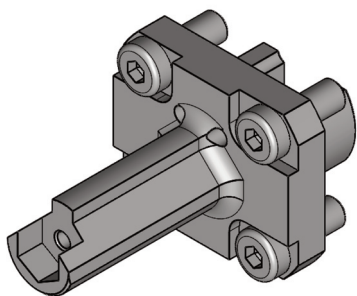
CODICE CODE	L1 (mm)	L2 (mm)	L3 (mm)	L4 (mm)	L5 (mm)	L6 (mm)	D1 (mm)	Foro min. (mm) Min hole (mm)	Peso (g) Weight (g)
ALUTM-S-02-25	26	29	8	9	27,5	19	6,5	7	28
ALUTM-S-03-25	26	29	8	9	27,5	19	8	8,7	34
ALUTM-S-04-25	26	29	8	9	27,5	19	8	8,7	34
ALUTM-S-05-25	26	29	8	9	27,5	19	12	13	40
ALUTM-S-06-25	26	29	8	9	27,5	19	16	17	45
ALUTM-S-08-25	26	29	8	9	27,5	19	18	19,5	58

Porta inserto Alutm-S serie 35
Insert holder Alutm-S 35 series

CODICE CODE	L1 (mm)	L2 (mm)	L3 (mm)	L4 (mm)	L5 (mm)	L6 (mm)	D1 (mm)	Foro min. (mm) Min hole (mm)	Peso (g) Weight (g)
ALUTM-S-02-35	25	58	13	20	43	35	6,5	7	0,15
ALUTM-S-03-35	30	63	13	20	43	35	8	8,7	0,16
ALUTM-S-04-35	40	73	13	20	43	35	10	11	0,17
ALUTM-S-05-35	46	79	13	20	43	35	12	13	0,18
ALUTM-S-06-35	46	79	13	20	43	35	16	17	0,21
ALUTM-S-08-35	46	79	13	20	43	35	20	21,5	0,225
ALUTM-S-10-35	46	79	13	20	43	35	22	24	0,235
ALUTM-S-12-35	46	79	13	20	43	35	25	27	0,245
ALUTM-S-14/16-35	46	79	13	20	43	35	28	30	0,245

Porta inserto Alutm-S serie 50
Insert holder Alutm-S 50 series

CODICE CODE	L1 (mm)	L2 (mm)	L3 (mm)	L4 (mm)	L5 (mm)	L6 (mm)	D1 (mm)	Foro min. (mm) Min hole (mm)	Peso (g) Weight (g)
ALUTM-S-02-50	25	58	13	20	43	35	6,5	7	0,15
ALUTM-S-03-50	30	63	13	20	43	35	8	8,7	0,16
ALUTM-S-04-50	40	73	13	20	43	35	10	11	0,17
ALUTM-S-05-50	46	79	13	20	43	35	12	13	0,18
ALUTM-S-06-50	56	89	13	20	43	35	16	17	0,21
ALUTM-S-08-50	60	93	13	20	43	35	20	21,5	0,245
ALUTM-S-10-50	60	93	13	20	43	35	22	24	0,265
ALUTM-S-12-50	60	93	13	20	43	35	25	27	0,285
ALUTM-S-14/16-50	60	93	13	20	43	35	28	30	0,31



Porta inserto Alutm-M serie 25
Insert holder Alutm-M 25 series

CODICE CODE	L1 (mm)	L2 (mm)	L3 (mm)	L4 (mm)	L5 (mm)	L6 (mm)	D1 (mm)
ALUTM-M-25	20	50	15	20	43	35	X

Porta inserto Alutm-M serie 35
Insert holder Alutm-M 35 series

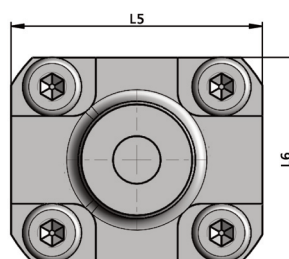
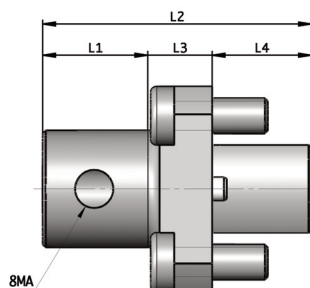
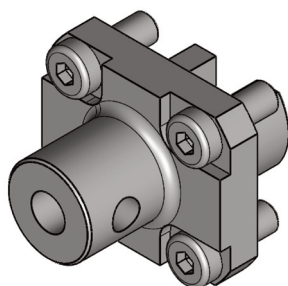
CODICE CODE	L1 (mm)	L2 (mm)	L3 (mm)	L4 (mm)	L5 (mm)	L6 (mm)	D1 (mm)
ALUTM-M-35	20	50	15	20	43	35	X

Porta inserto Alutm-M serie 50
Insert holder Alutm-M 50 series

CODICE CODE	L1 (mm)	L2 (mm)	L3 (mm)	L4 (mm)	L5 (mm)	L6 (mm)	D1 (mm)
ALUTM-M-50	20	50	15	20	43	35	X

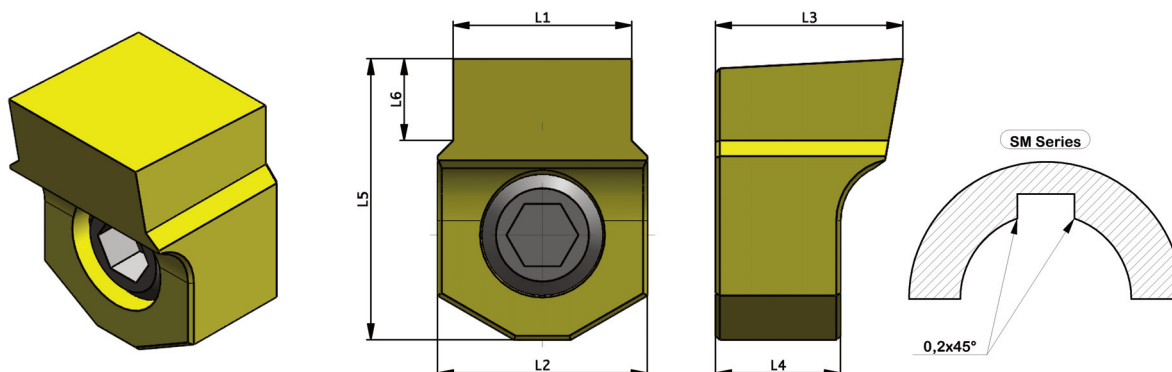
Porta inserto Alutm-M serie 65
Insert holder Alutm-M 65 series

CODICE CODE	L1 (mm)	L2 (mm)	L3 (mm)	L4 (mm)	L5 (mm)	L6 (mm)	D1 (mm)
ALUTM-M-65	20	50	15	20	43	35	X



Inserti (mm)
Inserts (mm)

CODICE CODE	L1 (mm)	L2 (mm)	L3 (mm)	L4 (mm)	L5 (mm)	L6 (mm)	Utensile Tool
ALIN-02 P9	1,994	5	6,5	5	6	1,3	UT-02
ALIN-02 P9-SM	1,994	5	6,5	5	6	1,09	UT-02
ALIN-02 H7	2,010	5	6,5	5	6	1,3	UT-02
ALIN-02 H7-SM	2,010	5	6,5	5	6	1,09	UT-02
ALIN-02 D10	2,060	5	6,5	5	6	1,3	UT-02
ALIN-02 C11	2,120	5	6,5	5	6	1,3	UT-02
ALIN-03 P9	2,994	6,08	6,5	5	7,5	2	UT-03
ALIN-03 P9-SM	2,994	6,08	6,5	5	7,5	1,42	UT-03
ALIN-03 H7	3,010	6,08	6,5	5	7,5	2	UT-03
ALIN-03 H7-SM	3,010	6,08	6,5	5	7,5	1,42	UT-03
ALIN-03 D10	3,06	6,08	6,5	5	7,5	2	UT-03
ALIN-03 C11	3,120	6,08	6,5	5	7,5	2	UT-03
ALIN-04 P9	3,998	6,08	7	5	8	2,6	UT-04
ALIN-04 P9-SM	3,998	6,08	7	5	8	2,07	UT-04
ALIN-04 H7	4,012	6,08	7	5	8	2,6	UT-04
ALIN-04 H7-SM	4,012	6,08	7	5	8	2,07	UT-04
ALIN-04 C11	4,145	6,08	7	5	8	2,6	UT-04
ALIN-05 P9	4,988	6,08	7	5	8	3	UT-05
ALIN-05 P9-SM	4,988	6,08	7	5	8	2,74	UT-05
ALIN-05 H7	5,012	6,08	7	5	8	3	UT-05
ALIN-05 H7-SM	5,012	6,08	7	5	8	2,74	UT-05
ALIN-05 D10	5,078	6,08	7	5	8	3	UT-05
ALIN-05 C11	5,145	6,08	7	5	8	3	UT-05
ALIN-06 P9	5,998	10,08	9	6	13,5	4	UT-06
ALIN-06 P9-SM	5,998	10,08	9	6	13,5	3	UT-06
ALIN-06 H7	6,012	10,08	9	6	13,5	4	UT-06
ALIN-06 H7-SM	6,012	10,08	9	6	13,5	3	UT-06
ALIN-06 D10	6,078	10,08	9	6	13,5	4	UT-06
ALIN-06 C11	6,145	10,08	9	6	13,5	4	UT-06
ALIN-08 P9	7,985	10,08	9	6	13,5	4,5	UT-08
ALIN-08 P9-SM	7,985	10,08	9	6	13,5	3,78	UT-08
ALIN-08 H7	8,015	10,08	9	6	13,5	4,5	UT-08
ALIN-08 H7-SM	8,015	10,08	9	6	13,5	3,78	UT-08
ALIN-08 D10	8,098	10,08	9	6	13,5	4,5	UT-08
ALIN-08 C11	8,170	10,08	9	6	13,5	4,5	UT-08
ALIN-10 P9	9,985	13,1	14	10	18,5	6	UT-10
ALIN-10 P9-SM	9,985	13,1	14	10	18,5	3,88	UT-10
ALIN-10 H7	10,015	13,1	14	10	18,5	6	UT-10
ALIN-10 H7-SM	10,015	13,1	14	10	18,5	3,88	UT-10
ALIN-10 D10	10,098	13,1	14	10	18,5	6	UT-10
ALIN-10 C11	10,170	13,1	14	10	18,5	6	UT-10
ALIN-12 P9	11,982	13,1	14	10	18,5	6,5	UT-12



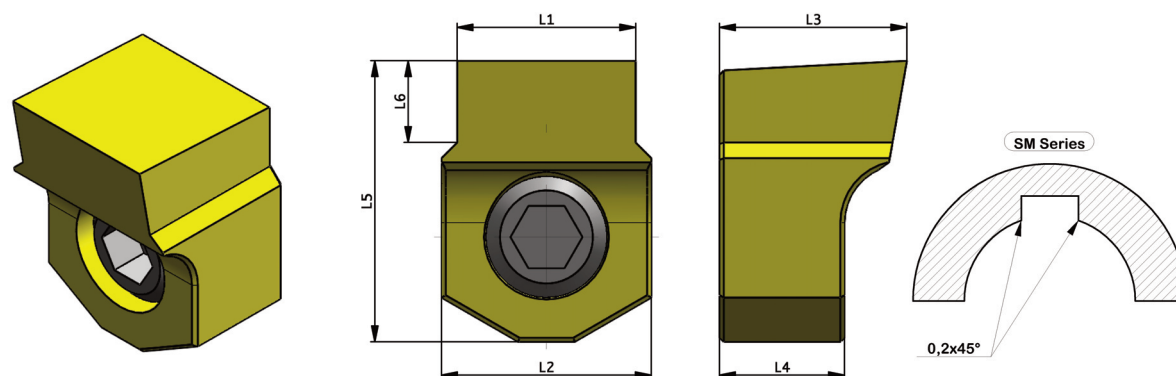
Inserti (mm)

Inserts (mm)

CODICE CODE	L1 (mm)	L2 (mm)	L3 (mm)	L4 (mm)	L5 (mm)	L6 (mm)	Utensile Tool
ALIN-12 P9-SM	11,982	13,1	14	10	18,5	3,89	UT-12
ALIN-12 H7	12,018	13,1	14	10	18,5	6,5	UT-12
ALIN-12 H7-SM	12,018	13,1	14	10	18,5	3,89	UT-12
ALIN-12 D10	12,12	13,1	14	10	18,5	6,5	UT-12
ALIN-12 C11	12,205	13,1	14	10	18,5	6,5	UT-12
ALIN-14 P9	13,982	18	14	10	22	7	UT-14/16
ALIN-14 P9-SM	13,982	18	14	10	22	4,71	UT-14/16
ALIN-14 H7	14,018	18	14	10	22	7	UT-14/16
ALIN-14 H7-SM	14,018	18	14	10	22	4,71	UT-14/16
ALIN-14 D10	14,120	18	14	10	22	7	UT-14/16
ALIN-14 C11	14,205	18	14	10	22	7	UT-14/16
ALIN-16 P9	15,982	18	14	10	22	8	UT-14/16
ALIN-16 P9-SM	15,982	18	14	10	22	5,53	UT-14/16
ALIN-16 H7	16,018	18	14	10	22	8	UT-14/16
ALIN-16 H7-SM	16,018	18	14	10	22	5,53	UT-14/16
ALIN-16 D10	16,120	18	14	10	22	8	UT-14/16
ALIN-16 C11	16,205	18	14	10	22	8	UT-14/16
ALIN-18 P9**	17,982	26	18	10	30	9	UT-18/25
ALIN-18 P9-SM**	17,982	26	18	10	30	5,67	UT-18/25
ALIN-18 H7**	18,018	26	18	10	30	9	UT-18/25
ALIN-18 H7-SM**	18,018	26	18	10	30	5,67	UT-18/25
ALIN-18 D10**	18,120	26	18	10	30	9	UT-18/25
ALIN-18 C11**	18,205	26	18	10	30	9	UT-18/25
ALIN-20 P9**	19,978	26	18	10	30	10	UT-18/25
ALIN-20 P9-SM**	19,978	26	18	10	30	6,29	UT-18/25
ALIN-20 H7**	20,021	26	18	10	30	10	UT-18/25
ALIN-20 H7-SM**	20,021	26	18	10	30	6,29	UT-18/25
ALIN-20 D10**	20,149	26	18	10	30	10	UT-18/25
ALIN-20 C11**	20,021	26	18	10	30	10	UT-18/25
ALIN-22 P9**	21,978	26	18	10	30	11	UT-18/25
ALIN-22 P9-SM**	21,978	26	18	10	30	6,79	UT-18/25
ALIN-22 H7**	22,021	26	18	10	30	11	UT-18/25
ALIN-22 H7-SM**	22,021	26	18	10	30	6,79	UT-18/25
ALIN-22 D10**	22,149	26	18	10	30	11	UT-18/25
ALIN-22 C11**	22,240	26	18	10	30	11	UT-18/25
ALIN-25 P9**	24,978	26	18	10	30	12	UT-18/25
ALIN-25 P9-SM**	24,978	26	18	10	30	7,02	UT-18/25
ALIN-25 H7**	25,021	26	18	10	30	12	UT-18/25
ALIN-25 D10**	25,149	26	18	10	30	12	UT-18/25
ALIN-25 C11**	25,240	26	18	10	30	12	UT-18/25

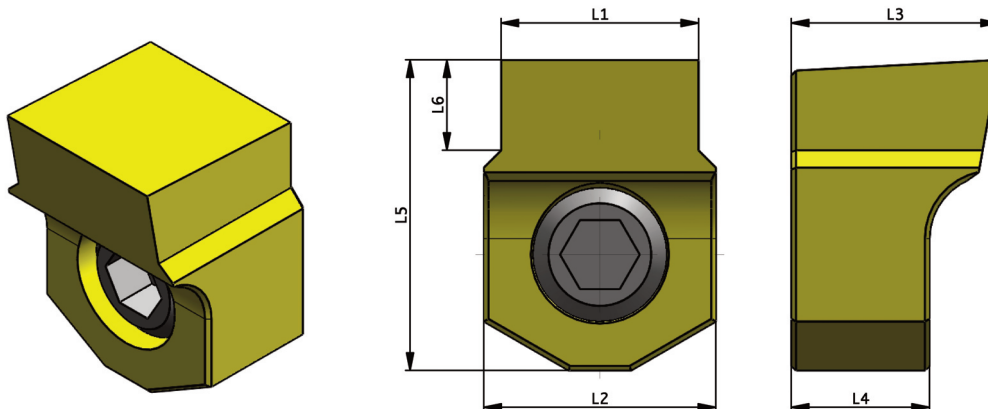
** Per queste misure di inserti si consiglia di suddividere la lavorazione in due fasi: sgrossatura e finitura.

** For these insert sizes, it is recommended to divide the process into two steps: roughing and finishing.



Inserti (pollici)
Inserts (inches)

CODICE CODE	L1 (mm)	L1 (pollici) L1 (inches)	L2 (pollici) L2 (inches)	L3 (pollici) L3 (inches)	L4 (pollici) L4 (inches)	L5 (pollici) L5 (inches)	L6 (pollici) L6 (inches)	Utensile Tool
ALIN-3/32"-P9	2,3752	0,0935	0,1968	0,2362	0,1968	0,2559	0,0551	UT-02
ALIN-3/32"-H7	2,3912	0,0941	0,1968	0,2362	0,1968	0,2559	0,0551	UT-02
ALIN-3/32"-D10	2,4412	0,0961	0,1968	0,2362	0,1968	0,2559	0,0551	UT-02
ALIN-3/32"-C11	2,5012	0,0984	0,1968	0,2362	0,1968	0,2559	0,0551	UT-02
ALIN-1/8"-P9	3,1630	0,1241	0,2393	0,2559	0,1968	0,2952	0,0905	UT-03
ALIN-1/8"-H7	3,1870	0,1254	0,2393	0,2559	0,1968	0,2952	0,0905	UT-03
ALIN-1/8"-D10	3,2530	0,1280	0,2393	0,2559	0,1968	0,2952	0,0905	UT-03
ALIN-1/8"-C11	3,3200	0,1307	0,2393	0,2559	0,1968	0,2952	0,0905	UT-03
ALIN-5/32"-P9	3,9687	0,1556	0,2393	0,2755	0,1968	0,3149	0,1141	UT-04
ALIN-5/32"-H7	3,9807	0,1567	0,2393	0,2755	0,1968	0,3149	0,1141	UT-04
ALIN-5/32"-D10	4,0467	0,1593	0,2393	0,2755	0,1968	0,3149	0,1141	UT-04
ALIN-5/32"-C11	4,1137	0,1619	0,2393	0,2755	0,1968	0,3149	0,1141	UT-04
ALIN-3/16"-P9	4,7510	0,1871	0,2393	0,2755	0,1968	0,3149	0,1299	UT-05
ALIN-3/16"-H7	4,7745	0,1879	0,2393	0,2755	0,1968	0,3149	0,1299	UT-05
ALIN-3/16"-D10	4,8405	0,1905	0,2393	0,2755	0,1968	0,3149	0,1299	UT-05
ALIN-3/16"-C11	4,9075	0,1932	0,2393	0,2755	0,1968	0,3149	0,1299	UT-05
ALIN-1/4"-P9	6,335	0,2494	0,3968	0,3543	0,2362	0,5314	0,1587	UT-06
ALIN-1/4"-H7	6,335	0,2505	0,3968	0,3543	0,2362	0,5314	0,1587	UT-06
ALIN-1/4"-D10	6,448	0,2538	0,3968	0,3543	0,2362	0,5314	0,1587	UT-06
ALIN-1/4"-C11	6,520	0,2566	0,3968	0,3543	0,2362	0,5314	0,1587	UT-06
ALIN-9/32"-P9	7,1287	0,2806	0,3968	0,3543	0,2362	0,5314	0,1692	UT-08
ALIN-9/32"-H7	7,1587	0,2818	0,3968	0,3543	0,2362	0,5314	0,1692	UT-08
ALIN-9/32"-D10	7,2417	0,2851	0,3968	0,3543	0,2362	0,5314	0,1692	UT-08
ALIN-9/32"-C11	7,3137	0,2879	0,3968	0,3543	0,2362	0,5314	0,1692	UT-08
ALIN-5/16"-P9	7,9225	0,3119	0,3968	0,3543	0,2362	0,5314	0,1875	UT-08
ALIN-5/16"-H7	7,9525	0,313	0,3968	0,3543	0,2362	0,5314	0,1875	UT-08
ALIN-5/16"-D10	8,0355	0,3163	0,3968	0,3543	0,2362	0,5314	0,1875	UT-08
ALIN-5/16"-C11	8,1075	0,3191	0,3968	0,3543	0,2362	0,5314	0,1875	UT-08

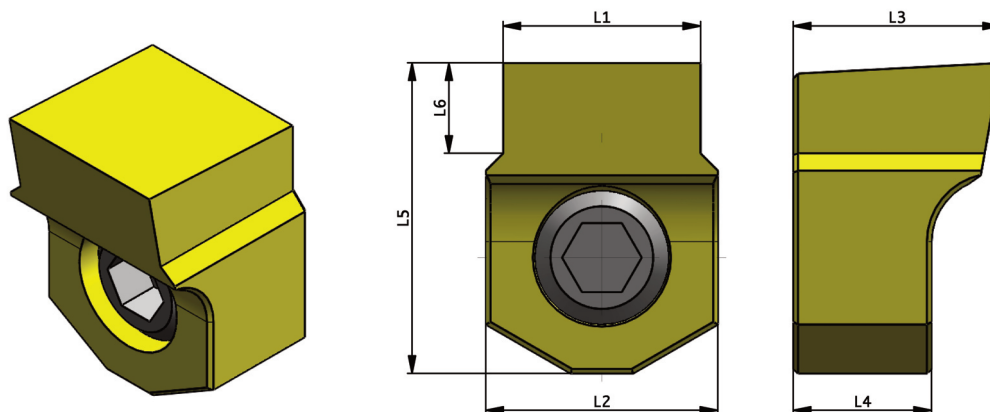


Inserti (pollici)
Inserts (inches)

CODICE CODE	L1 (mm)	L1 (pollici) L1 (inches)	L2 (pollici) L2 (inches)	L3 (pollici) L3 (inches)	L4 (pollici) L4 (inches)	L5 (pollici) L5 (inches)	L6 (pollici) L6 (inches)	Utensile Tool
ALIN-3/8"-P9	9,511	0,3744	0,5175	0,5511	0,3937	0,7283	0,2500	UT-10
ALIN-3/8"-H7	9,540	0,3755	0,5175	0,5511	0,3937	0,7283	0,250	UT-10
ALIN-3/8"-D10	9,623	0,3788	0,5175	0,5511	0,3937	0,7283	0,250	UT-10
ALIN-3/8"-C11	9,695	0,3816	0,5175	0,5511	0,3937	0,7283	0,250	UT-10
ALIN-7/16"-P9	11,0945	0,4367	0,5175	0,5511	0,3937	0,7283	0,250	UT-12
ALIN-7/16"-H7	11,1305	0,4382	0,5175	0,5511	0,3937	0,7283	0,250	UT-12
ALIN-7/16"-D10	11,2325	0,4422	0,5175	0,5511	0,3937	0,7283	0,250	UT-12
ALIN-7/16"-C11	11,3175	0,4455	0,5175	0,5511	0,3937	0,7283	0,250	UT-12
ALIN-1/2"-P9	12,682	0,4992	0,5175	0,5511	0,3937	0,7283	0,300	UT-12
ALIN-1/2"-H7	12,718	0,5007	0,5175	0,5511	0,3937	0,7283	0,300	UT-12
ALIN-1/2"-D10	12,8200	0,5047	0,5175	0,5511	0,3937	0,7283	0,300	UT-12
ALIN-1/2"-C11	12,9050	0,508	0,5175	0,5511	0,3937	0,7283	0,300	UT-12
ALIN-9/16"-P9	14,2695	0,5617	0,7086	0,5511	0,3937	0,8661	0,275	UT-14/16
ALIN-9/16"-H7	14,3055	0,5632	0,7086	0,5511	0,3937	0,8661	0,275	UT-14/16
ALIN-9/16"-D10	14,4075	0,5672	0,7086	0,5511	0,3937	0,8661	0,275	UT-14/16
ALIN-9/16"-C11	14,4925	0,5705	0,7086	0,5511	0,3937	0,8661	0,275	UT-14/16
ALIN-5/8"-P9	15,8570	0,6242	0,7086	0,5511	0,3937	0,8661	0,312	UT-14/16
ALIN-5/8"-H7	15,8930	0,6257	0,7086	0,5511	0,3937	0,8661	0,312	UT-14/16
ALIN-5/8"-D10	15,9950	0,6297	0,7086	0,5511	0,3937	0,8661	0,312	UT-14/16
ALIN-5/8"-C11	16,080	0,633	0,7086	0,5511	0,3937	0,8661	0,312	UT-14/16
ALIN-3/4"-P9*	19,028	0,7491	1,0236	0,7086	0,3937	1,1811	0,393	UT-18/25
ALIN-3/4"-H7*	19,071	0,7508	1,0236	0,7086	0,3937	1,1811	0,393	UT-18/25
ALIN-3/4"-D10*	19,199	0,7558	1,0236	0,7086	0,3937	1,1811	0,393	UT-18/25
ALIN-3/4"-C11*	19,290	0,7594	1,0236	0,7086	0,3937	1,1811	0,393	UT-18/25

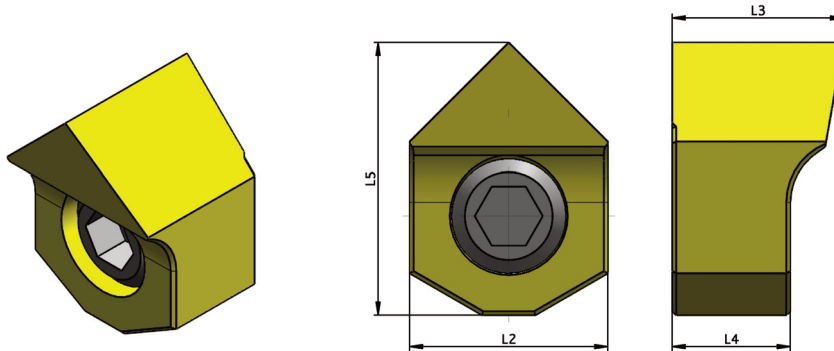
* Per queste misure di inserti si consiglia di suddividere la lavorazione in due fasi: sgrossatura e finitura.

* For these insert sizes, it is recommended to divide the process into two steps: roughing and finishing.



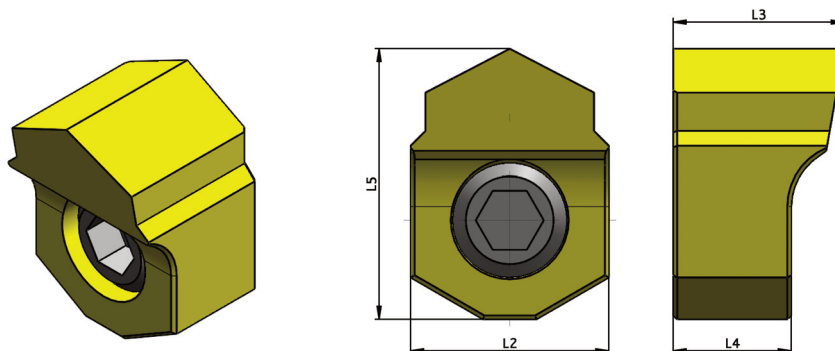
Inserti per quadro
Inserts for square

CODICE CODE	Campo di lavoro (mm) Working range (mm)	Campo di lavoro (pollici) Working range (inches)	L2 (mm)	L3 (mm)	L4 (mm)	L5 (mm)	Utensile Tool
ALIN-SQ-8/10	08mm/10mm	0,314/0,393	6	7	5	7	UT-SQ-8/10
ALIN-SQ-10/13	10mm/13mm	0,393/0,511	6	7	5	7,5	UT-SQ-10/13
ALIN-SQ-13/16	13mm/16mm	0,511/0,629	10	8	6	12	UT-SQ-13/16
ALIN-SQ-16/19	16mm/19mm	0,629/0,748	10	8	6	12,5	UT-SQ-16/19
ALIN-SQ-19/27	19mm/27mm	0,748/1,062	13	13	10	17	UT-SQ-19/27
ALIN-SQ-27/37	27mm/37mm	1,062/1,456	18	14	10	22	UT-SQ-27/37
ALIN-SQ-37/50	37mm/50mm	1,456/1,968	26	18	10	30	UT-SQ-37/50


Inserti per esagono
Inserts for hexagon

12

CODICE CODE	Campo di lavoro (mm) Working range (mm)	Campo di lavoro (pollici) Working range (inches)	L2 (mm)	L3 (mm)	L4 (mm)	L5 (mm)	Utensile Tool
ALIN-HEX-9/11	09mm/11mm	0,354/0,433	6	7	5	7,5	UT-HEX-9/11
ALIN-HEX-11/17	11mm/17mm	0,433/0,669	6	7	5	8	UT-HEX-11/17
ALIN-HEX-17/28	17mm/28mm	0,669/1,102	10	9	6	13,5	UT-HEX-17/28
ALIN-HEX-28/37	28mm/37mm	1,102/1,456	13	14	10	18,5	UT-HEX-28/37
ALIN-HEX-37/45	37mm/45mm	1,456/1,771	18	14	10	22	UT-HEX-37/45
ALIN-HEX-45/70	45mm/70mm	1,771/2,755	26	16	10	30	UT-HEX-45/70



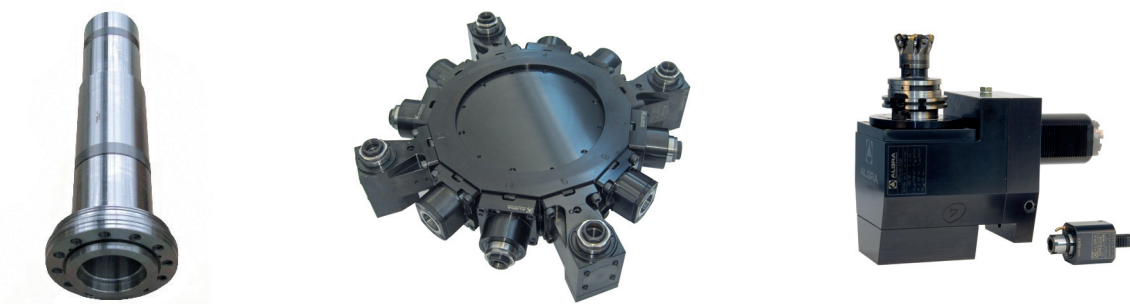
**La produzione:
il lavoro**
Production:
work

La produzione viene sviluppata nella moderna struttura a temperatura controllata di Almenno San Salvatore, mentre negli stabilimenti di Brembilla (I-Bergamo) vengono effettuate le lavorazioni di montaggio ed assemblaggio di gruppi completi. La superficie coperta delle strutture è di mq. 15.000, dei quali mq. 1.000 sono adibiti agli uffici amministrativi, commerciali e tecnici. L'attività produttiva si svolge con l'utilizzo di impianti e macchinari CNC costantemente aggiornati alle nuove tecnologie ed in grado di sviluppare le seguenti lavorazioni:

- Asportazione di truciolo
- Elettroerosione
- Tornitura orizzontale e verticale
- Fresatura universale 5 assi
- Fresatura/tornitura
- Lappatura per fori e piani
- Rettifica in tondo interno ed esterno
- Rettifica in tangenziale oltre al montaggio di gruppi e sottogruppi completi.

The production is developed in the modern, temperature controlled facility in Almenno San Salvatore, with Brembilla factories there are the assembly operations and the assembly of complete groups. The facilities covered area is of 15,000 sqm., 1,000 sqm. of which are used for the administrative commercial and technical offices. The production cycle takes place with the use of CNC fixtures and equipment constantly updated with new technologies and able to develop the following machining:

- Chip machining
- Electroerosion
- Horizontal and vertical turning
- 5-axis universal milling
- Milling/turning
- Lapping for holes and plane surfaces
- Cylindrical internal and external grinding
- Tangential grinding in addition to the assembly of complete groups and subassemblies.



**Certificazioni:
uno standard
qualitativo**
Certification:
a quality
standard

La tecnologia avanzata svolge un ruolo chiave nell'obiettivo di incrementare il proprio valore, quello dei propri prodotti, dei servizi e della capacità del personale, operando nel rispetto delle norme UNI EN ISO 9001:2008 e ISO 14001:2004. L'alto livello di sensibilità verso il rispetto delle regole di sicurezza e dell'ambiente è presente ed immediatamente percepito in tutte le strutture aziendali.

Advanced technology plays a key role aiming to increase its value and the products, services and staff capacity value, operating in compliance with UNI EN ISO 9001:2008 and ISO 14001:2004.

The high level of sensitivity towards the observance of safety rules and the environment is present and perceived immediately in all facilities.



UNI EN ISO 9001:2008 - Cert. n° 0141



UNI EN ISO 14001:2004 - Cert. n° 0270A



Our partners:

**ALGERIA - MOROCCO - TUNISIA -
COTE D'IVOIRE**
BUCCI INDUSTRIES FRANCE SARL
145 Rue Louis Armand Zi Des Grands
Pres, 74300 - Cluses (France)
Phone: +33 450896957

ARGENTINA - BRAZIL - PERU
BUCCI INDUSTRIES BRASIL
(IGM DO BRASIL)
Avenida Dos Pinheiros 465, 13283-008
João XXIII - Vinhedo SP
Phone: +55 19 3515 7220

AUSTRALIA
MILLER'S TOOLING PTY LTD
13/8 Riverland Drive, QLD 4129
Loganholme (Australia)
Phone: +61 07 3806 0996

**BELGIUM - NETHERLANDS - LIE-
CHTENSTEIN - LUXEMBURG**
BUCCI INDUSTRIES BENELUX
Allée Verte 12, B-5150 Floreffe (Belgium)
Phone: +32 496 10 10 90

BULGARIA
RAIS LTD
58, Dimcho Debelianov Str., 4400 -
Pazardjik (Bulgaria)
Phone: +359 34444255

CANADA - MEXICO - USA
BUCCI INDUSTRIES USA, INC
9332 Forsyth Park Dr, Charlotte, NC
28273 (USA)
Phone: +1 7045838341

CHINA
SHANGHAI LUOTUO
AUTOMATION TECHNOLOGY CO.
Room 1601 no.23, Lane 2399 - North
Guyang R. Songjiang District, 201620 -
Shanghai (China)
Phone: +86 2164120150

CZECH REPUBLIC
BO-IMPORT S.R.O.
Olomoucká 2371/189, Šternberk, 785
01 (Czech Republic)
Phone: +420 603 285 443

EGYPT
WINTech MACHINERY & TOOLING
90 El-Thawra St., 11341 Heliopolis -
Cairo (Egypt)
Phone: +2 02 26903608

FRANCE
BUCCI INDUSTRIES FRANCE SARL
145 Rue Louis Armand Zi Des Grands
Pres, 74300 - Cluses (France)
Phone: +33 450896957

GERMANY - AUSTRIA
BUCCI INDUSTRIES DEUTSCHLAND
GMBH
Stammheimer Str. 10,
70806 Kornwestheim (Germany)
Phone: +49 7154 8370 700

INDIA - AZERBAIJAN - BANGLADESH
BAHRAIN - IRAN - KASACHSTAN -
KUWAIT - SAUDI ARABIA - SRI LANKA
DWIJ CONSULTANTS
25 Payal Park, Opp. Sundervan, Satellite
Rd , 380 015 - Ahmedabad (India)
Phone: +91 7926760747

IRELAND
LISTER MACHINE TOOL LIMITED
PO Box 838, Bluebell Industrial Estate,,
Dublin (Ireland)
Phone: +39 035 643131

ISRAEL
R.R ADVANCED TOOLING LTD
19,Hamerkava St., 5885113 - Holon
(Israel)
Phone: +72 3 7588818

JAPAN
BUCCI INDUSTRIES JAPAN-IGM NIPPON
Kamoi, 6-10-1 Midori-Ku, 226-0003
Yokohama-Shi Kanagawa (Japan)
Phone: +81 45 931 5096

NEW ZELAND
SCOTT MACHINERY LIMITED
51 Gilberthorpes Rd,
Po Box 16213 Hornby, 8441
Christchurch (New Zealand)
Phone: +64 33492266

POLAND
NARZĘDZIA SKRAWAJĄCE TOOLS
SP. Z O.O.
ul. Władysława Grabskiego 25,,
Siechnice, 55-011 (Poland)
Phone: +48 713435858

RUSSIA - BELARUS
SOLVER ENGINEERING LLC
43 Stankevicha Str, 394006 - Voronezh
(Russia)
Phone: +7 4732777222

SPAIN
DAISA TECHNOLOGIC, S.L.
Urdaneta Bidea 13 P.I.Abendano Local n 4,
20800 - Zarautz Gipuzkoa (España)
Phone: +34 943133739

SOUTH KOREA
LINKONEER
427, Dusan Best tel 37, Sangnam-ro,
Seongsan-gu, 51505, Gyeongsangnam-do
(South Korea)
Phone: +82 10 4184 1456

**SWEDEN - DENMARK - FINLAND -
NORWAY**
BUCCI INDUSTRIES NORDIC AB
Kungegårdsgatan 7,
441 57 Alingsås (Sweden)
Phone: +46 322 66 87 20

SWITZERLAND
BUCCI INDUSTRIES SWISS SA
Route Du Grandval 3, CH-2744
Belprahon (Suisse)
Phone: +41 324934054

**TAIWAN - INDONESIA - VIETNAM -
MALAYSIA - THAILAND - SINGAPORE -
PHILIPPINES**
MONGTEC PRECISION INC.
2f, No.156, Futain 3rd St., South Dist.,
40241 - Taichung City (Taiwan)
Phone: +886 422653360

TURKEY
SELEN MAKINE VE TEKNOLOJI
HIZ.SAN.TIC.LTD.STI
Gaziler Mah. Ibrahimaga Cad no:255/b,
Gebze/Kocaeli (Turkey)
Phone: +90 2626413208

UNITED KINGDOM
YMT LTD
Tuscan House, G. Smith Way, Lufton
Tr.Est., BA22 8GR - Yeovil Somerset
(England)
Phone: +44 1935 428375



ALGRA S.p.A. Divisione accessori
Via Manzoni, 41 24031 Almenno S. Salvatore (BG)
Tel. +39 035.64.20.51 • Fax +39 035.64.01.28
algra.accessori@algra.it - www.algra.it